

Chapter

1

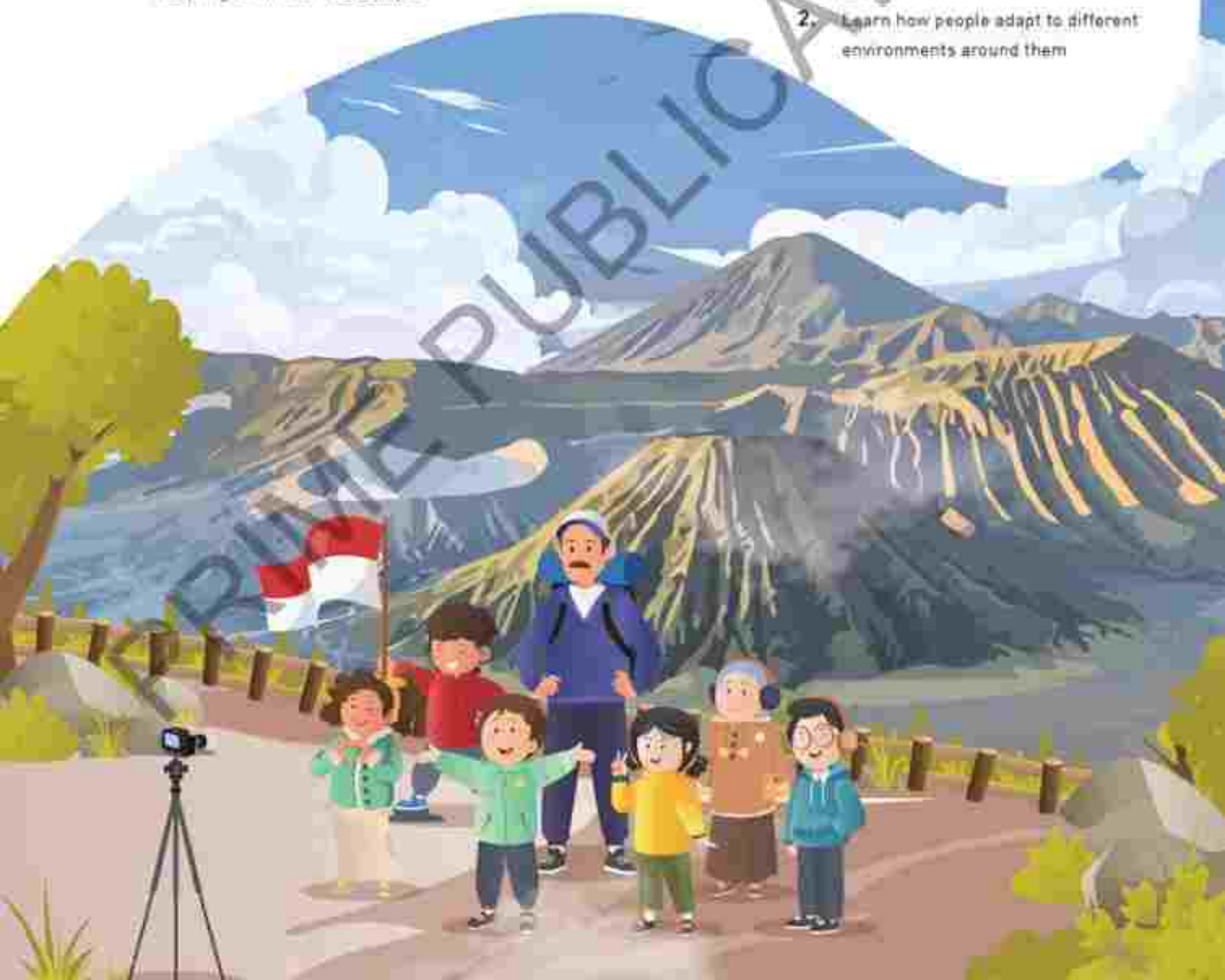
Natural Landscapes and Socio-Cultural Diversity

Focus on

- Indonesian landscape
- Adapting to different landscapes

Learning Objectives

1. Identify different types of landscapes in nature
2. Learn how people adapt to different environments around them



Warm Up

Look at the picture. Isn't it amazing? This is Raja Ampat, one of the most famous and beautiful places in Indonesia. People from all over the world come to see its stunning landscapes.

Can you imagine what it would be like to visit? Raja Ampat has it all—tall, green hills, sparkling blue waters, and coral reefs full of colourful fish!

What do you see in the picture?



Figure 11 – Raja Ampat Archipelago, Papua

Welcome to Indonesia: A Land of Many Wonders

From Sabang all the way to Merauke, our country is filled with magical places. Some places have tall mountains, others have sandy beaches, and in between, there are forests, rivers, and valleys. What's even more magical is how all these diverse places come together to form one single, united country—Indonesia. This unity did not happen by chance. We need to thank our founding fathers who imagined Indonesia as a nation where people from thousands of islands, with different cultures, languages, and traditions, could come together as one. Their vision turned an idea into reality, creating a shared identity that connects us all, no matter where we live.

But Indonesia is not just about its landscapes—it is about its people. Every place in our country is unique, just like the people who live there. People who live in these places adapt to their environment to make the most of what it offers. Some wear warm clothes, some build special houses, and some have jobs that depend on the land around them. Let's explore how people live in these different places and how they adapt to their surroundings!

Scan Me!



Let's Find Out!

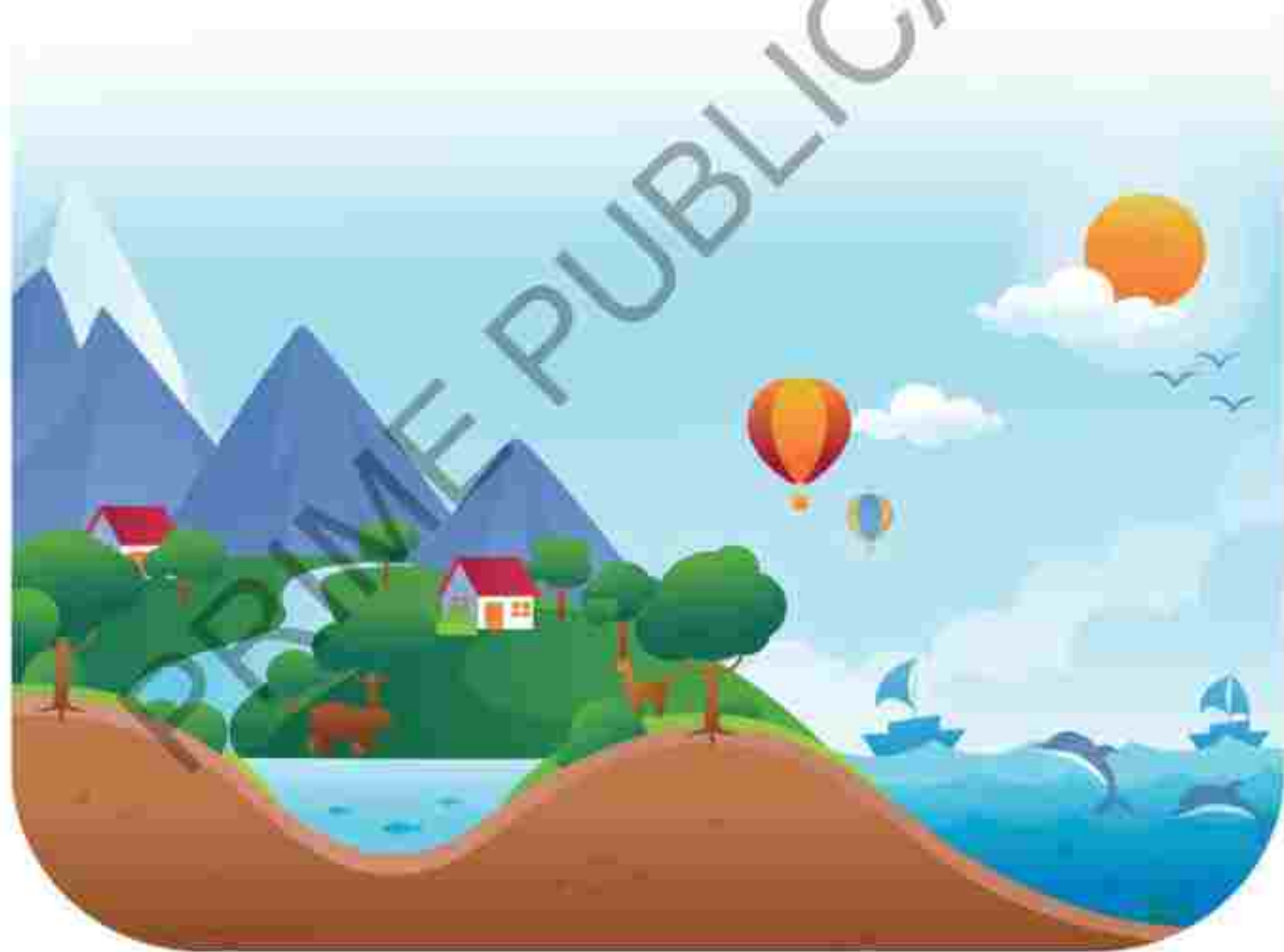
Before we begin our journey, let's think about the world around us. Answer these questions in your own words.

1. What kind of landscape do you see around your home? Is it flat like a plain or hilly like a mountain?
2. Do you think the land around you affects how people live? Does it shape the jobs they do or the way they dress?
3. How do people in your community adapt to the natural environment they live in?

What Do Indonesian Landscapes Look Like?

Imagine standing on top of a mountain, so high up that you feel like you can touch the clouds. How about walking along a beach with the warm sand under your feet and the ocean stretching as far as you can see? These are just a few examples of the incredible landscapes you can find in Indonesia. But wait, what exactly is a landscape?

A **landscape** is like nature's giant painting—it's everything you see around you, from mountains and plains to rivers and lakes. Landscapes show the beauty of the environment, and while they can be shaped by people, natural landscapes fall into two categories: land and water landscapes.



The Great Land Adventure

Land is the solid part of the Earth that we walk, run, and play on. It is everything you see around you, like flat lowlands, tall highlands, mighty mountains, deep valleys, cape, and peninsula. Imagine them as the Earth's big, bumpy blanket. The height of these places is measured starting from the sea – at 0 meter, just like when you are standing right at the beach.

Lowlands: The Wide, Flat Adventure

Imagine walking through flat fields with rice growing all around or standing on a beach with waves gently touching your toes. These places are **lowlands**—flat areas close to sea level, between 0–200 meters. Along the coast, you will find sandy beaches and mangrove forests that protect the land from erosion. Swamps and wetlands, like the Mahakam Delta in East Kalimantan, are full of life, providing homes for birds and fish while absorbing floodwaters. Vast plains, such as those in Central Java, stretch out like green carpets, perfect for farming crops like rice and sugarcane.

Figure 1.2 – Mahakam Delta, East Kalimantan



Adventure Challenge



You and your team are exploring the lowlands. The sun is blazing, and the heat is intense. To survive, you need to find food, water, and shelter while staying safe. How will you find water? What natural sources are available? What food can you find? What materials can you use to build a shelter from the heat?

Figure 1.3 - Dieng Plateau - Central Java



Highlands: Cool Breezes and Beautiful Views

Have you ever visited a highland?

Highlands, which are areas more than 500 meters above sea level, are known for their cooler climates. In highlands, you can find towering mountains, such as Mount Bromo in East Java, with its misty sunrises, and flat-topped plateaus like the Dieng Plateau in Central Java,

which is ideal for farming. Terraced fields, resembling green steps carved into steep hills, allow farmers in places like Karo Highland, North Sumatra, to grow crops like potatoes and carrots. Highlands are also home to beautiful waterfalls, such as Gitgit Waterfall in Bali. Some highlands even feature volcanic craters turned into lakes, like Kawah Putih near Bandung, West Java. Highlands are truly special places, perfect for outdoor activities like hiking, enjoying the cool weather, and admiring the incredible landscapes.

Mountains: Climbing the Tall Giants

Mountains are tall landforms that rise high above everything around them. In Indonesia, mountains come in two main types: volcanic and non-volcanic. **Volcanic mountains**, such as Mount Sinabung in North Sumatra, are formed through volcanic activity, where lava and ash build up to create towering peaks. Some volcanic mountains remain active, occasionally erupting and shaping the land, while others, like Mount Batok in East Java, have become inactive, standing as silent witnesses to their fiery past.

Non-volcanic mountains, on the other hand, are formed by the immense forces of the Earth's crust. A remarkable example is Puncak Jaya or Carstensz Pyramid, in Papua. Unlike volcanic peaks, these mountains adding to Indonesia's diverse natural heritage.

Some mountains stretch together in long chains, forming what we call **mountain ranges**. These ranges not only define the landscape but also influence the way people live. In Indonesia, communities in mountainous areas have ingeniously adapted to the steep terrain by creating terrace fields for farming, allowing them to grow crops like vegetables even on rugged slopes.

Mountains do far more than just offer amazing views. They play a critical role in sustaining life by regulating water cycles, acting as natural water towers that supply rivers and streams. Their ecosystems provide habitats for countless plant and animal species, many of which are found nowhere else.



Figure 1.4 - Jayawijaya Mountain, Central Papua

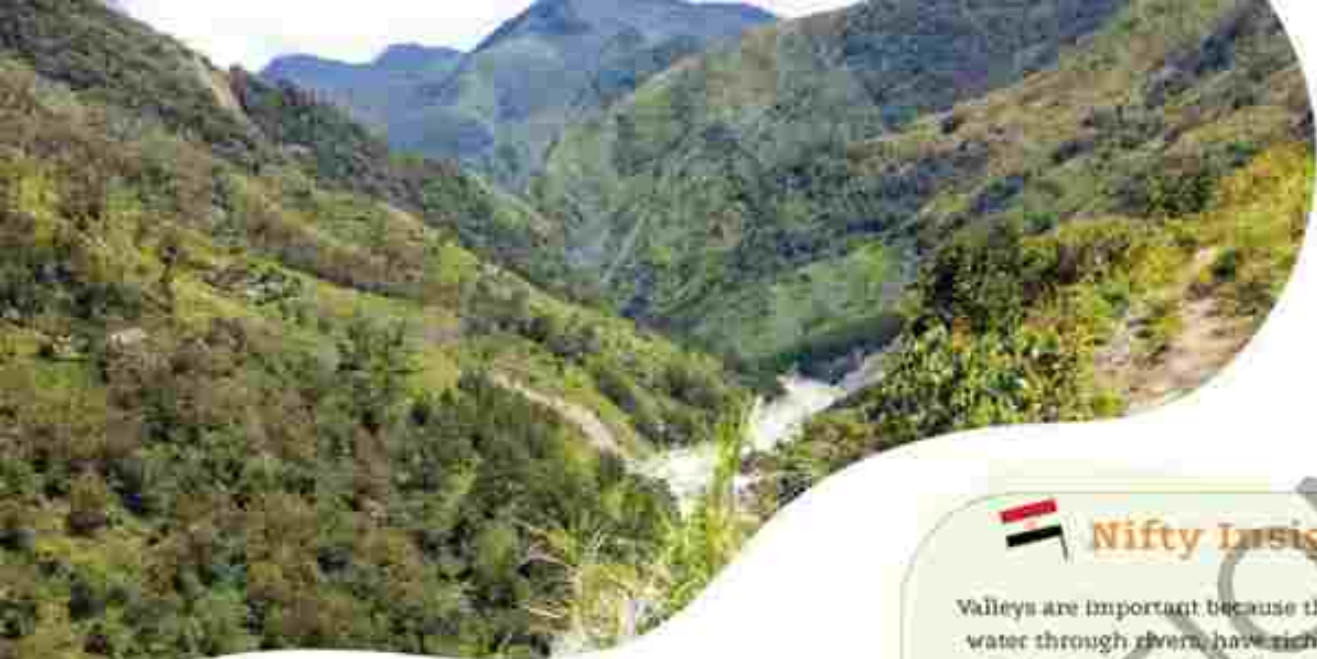


Figure 1.5 - Baliem Valley, Papua



Nifty Insight



Valleys are important because they provide fresh water through rivers, have rich soil for farming which helped ancient civilisations like Egypt and China grow, and serve as cosy homes for wildlife with forests, meadows, and grazing animals.

Valleys: Down Between the Mountains

Have you ever seen a valley? A **valley** is like a big dip in the land, sitting between mountains or hills. It is a natural pathway that nature has shaped over a long, long time. Valleys are made by rivers flowing through the land or even by slow-moving ice called glaciers. They come in all shapes and sizes, and each one is special.

There are two types of valleys: highland valleys and lowland valleys. **Highland valley** are deep and narrow, like giant cracks in the earth. Fast rivers or ancient glaciers carve them out over thousands of years. **Lowland valleys** are wide and open. Slow rivers shape them gently and leave behind soil that is perfect for farming. These valleys are like giant gardens where people grow rice, wheat, and corn.

One of the most famous valleys in Indonesia is the Baliem Valley in Papua. This valley is located in the central highlands and is home to the Dani people, known for their unique culture and traditions. Surrounded by lush mountains and rivers, the Baliem Valley offers stunning landscapes and is a popular destination for cultural tourism. It is the site of the annual Baliem Valley Festival, showcases traditional Papuan tribal dances, music, and mock battles.

Cape or Peninsula: Land Sticking Out Into the Sea

Next, we are heading to a cape. Look out at the sea stretching all around us. A **cape** or **peninsula** is a piece of land that juts out into the water, almost like nature's way of creating a lookout point over the ocean. It can feel like you are at the edge of the world, with the sea surrounding you on almost all sides.

What is the difference?



A cape is a smaller piece of land that sticks out into the sea. It usually faces a single body of water, such as seas.

A peninsula is much bigger. It is usually surrounded by a combination of different bodies of water, such as seas or oceans.

These landforms are often found where the land meets the ocean. One famous cape in Indonesia is Tanjung Puting in Central Kalimantan. This cape is known for its tropical rainforest and is home to the Tanjung Puting Nasional Park, which is famous for its orangutan conservation efforts.



Figure 1.6 - Tanjung Puting Cape, Central Kalimantan



Water Areas: Exploring the Blue Wonders



Did you know that over 70% of the Earth is covered by water? That's right! Oceans, strait, rivers, lakes, and seas make up most of our planet. Let's explore the amazing bodies of water that make Earth so special!

Rivers: Nature's Highways

A **river** is a flowing body of water that usually begins its journey in the highlands or mountains. As rainwater or melting snow gathers in these higher places, it forms streams that flow downhill, eventually turning into rivers. The force of gravity pulls the water downwards, carving out valleys and shaping the land as it moves. Rivers flow toward larger bodies of water, like seas, oceans, or lakes, bringing life to the areas they pass through. It provides fresh water for plants, animals, and humans. It also makes the soil fertile for farming.



Nifty Insight

Rivers in Kalimantan are so important that people build floating houses on them. Several rivers in Kalimantan are also used as places for trading, which are called floating markets. One example is the Lok Baintan Floating Market Martapura River, South Kalimantan.

Lakes: Giant Pools of Water

A **lake** is a large body of water surrounded by land. Lakes are formed by natural events like volcanic eruptions or shifts in the earth's surface. Lake Toba in North Sumatra is one of the largest lakes in Indonesia and was formed by a volcanic eruption thousands of years ago.

Adventure Challenge



You and your team have arrived at Lake Toba. What will you do here? are you going to go fishing, swimming, or explore the area? How will you find food and water? Work together to create your lake adventure plan.

Straits: Narrow Passages of Water

A **strait** is a narrow water passage between two pieces of land, like islands or even continents. Straits act like water highways, allowing boats and ships to travel between larger bodies of water, such as seas or oceans. Throughout history, controlling a strait meant having lots of power. For example, the Malacca Strait is one of the busiest shipping lanes in the world.

Located between the Malay Peninsula and Sumatra, it connects the Indian and Pacific Oceans. Over 100,000 ships pass through each year, making it a key route for global trade.

Nifty Insight

The Bosphorus Strait in Turkey connects Europe and Asia and has been a busy route for trade and big empires for hundreds of years. Straits are not just useful—they are also full of stories and excitement!

Figure 1.8 – Toba Lake, North Sumatra

Figure 1.9 – Malacca Strait, Indonesia

Oceans: The Great Sea

Seas and **oceans** are vast bodies of saltwater that cover most of the Earth's surface. They are like the planet's giant playgrounds, filled with incredible creatures, from tiny fish to enormous whales. These waters connect different parts of the world, allowing ships to travel, fish to swim, and waves to roll across the globe.

What is the difference between a seas and an oceans? Oceans are much larger and deeper, while seas are smaller and often surrounded by land. For example, Indonesia is next to two huge ocean, the Indian Ocean and the Pacific Oceans. Seas like the Java Sea separate some of its islands.

Oceans and seas are really important for life on Earth. They are home to coral reefs, fish, and many sea animals. They also help control the weather and allow people to travel and trade.

Figure 1.10 – Bunaken National Park, North Sulawesi

Adventure Challenge

Your team is sailing across the sea. What will you need to survive the journey? How will you find food and protect yourselves from the sun? Work together to plan your sea adventure.



Exploring all these different landscapes is cool, but did you know that people have to adapt to survive in each one? From the hot beaches to the cold mountains, every landscape has its own challenges. Like in coastal areas like Labuan Bajo, fishermen rely on boats to catch fish.



Figure 1.11 – Labuan Bajo, NTT

Figure 1.12 – Dieng, Central Java



Adapting means changing the way you live so that you can survive in different conditions. In colder regions, people use warm clothing and special shelters to stay safe and warm. Let's see how people adapt to their landscapes!

Adjusting to Air Temperature: Stay Cool or Keep Warm

Imagine you are at a hot beach, feeling the sun on your face. Now, suddenly you are in the cold mountains. What do you do? Your body will need some time to get used to the new temperature. If you are in the mountains, you will need a jacket and maybe a warm drink to help keep you warm.

In hot areas like beaches and lowlands, people wear light clothes and eat refreshing fruits and drink iced drinks to stay cool. On the other hand, in cold mountain areas, people wear thick clothes, like jackets, and drink hot drinks like ginger tea and eat soup to stay warm.



Nifty Insight

Living high up in the mountains means the air is thinner, so it is harder to breathe. But over time, the Tibetan people's bodies have adapted, so they have developed bigger lungs and more red blood cells to help them get more oxygen with every breath.

Adventure Challenge

Your team is moving from a hot beach to a cold mountain. What will you pack in your survival kit? Make a list of clothes, drinks, and food you will need for the journey.





Figure 1.13 – Fishermen catch fish at the sea.



Figure 1.14 – Potato farmers at the Dieng Highland

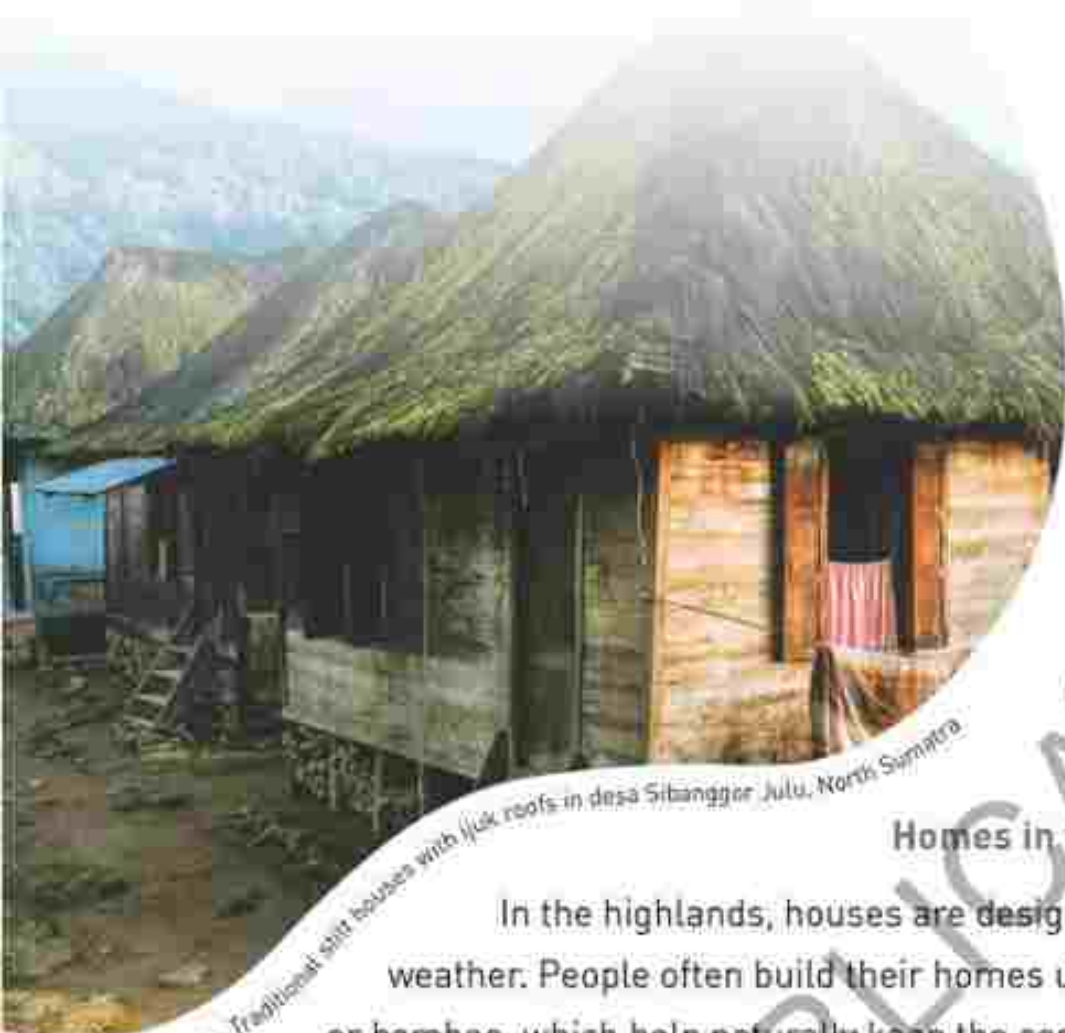


Figure 1.15 – Traditional stilt houses with ijuk roofs in desa Sibanggor Julu, North Sumatra

Life in the Highlands

Have you ever been to a place high up in the mountains where the air feels cool and fresh? Want to know how they adapt to life up there? Let's find out together!

Homes in the Highlands

In the highlands, houses are designed to handle the chilly weather. People often build their homes using materials like wood or bamboo, which help naturally keep the cool inside when it is hot outside and keep the warm in when it is cold outside. The roofs are steep to stop rain from pooling on top of it, making the houses sturdy against the weather.

Crops in the Highlands

The cold weather is perfect for growing vegetables, such as broccoli, cabbage, potatoes, and carrots, as well as plantation crops, such as tea and coffee. These crops thrive in the cool climate and are important to highland life.

Figure 1.16 – Coffee plantation at the Gayo Highland Nanggroe Aceh Darussalam



Cultural Festivities

Kasada Festival at Mount Bromo is a special festival celebrated by the Tenggerese people who live near Mount Bromo, a volcano in East Java, Indonesia.

During this festival, people bring offerings like rice, fruits, vegetables, and even animals to the top of the mountain. They throw these offerings into the volcano as a way to say "thank you" to their gods for all the blessings they've received.



Figure 1.17 - The Kasada festival, East Java

Figure 1.18 - Onion farm terraces in Majalengka, West Java



Jobs in the Highlands

Farming is the main job in the highlands. People grow vegetables and raise sheep and goats. Farmers use terracing to grow crops on steep hills, preventing soil from washing away. Terraces look like stairs on the mountains from far away.

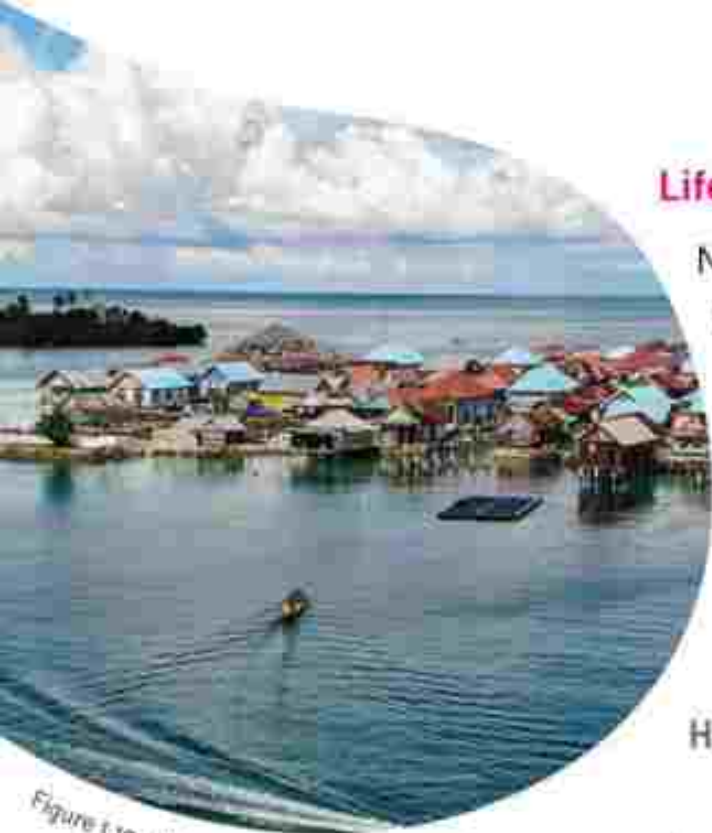


Figure 1.19 – Wakatobi, Southeast Sulawesi

Life in the Lowlands

Now, let's take a trip down to the lowlands! Unlike the highlands, the lowlands are flat and warm, with lots of rivers and open fields. Life here is quite different from life up in the mountains. Pay close attention as we explore life in the lowlands—you might spot some exciting differences from the highlands!

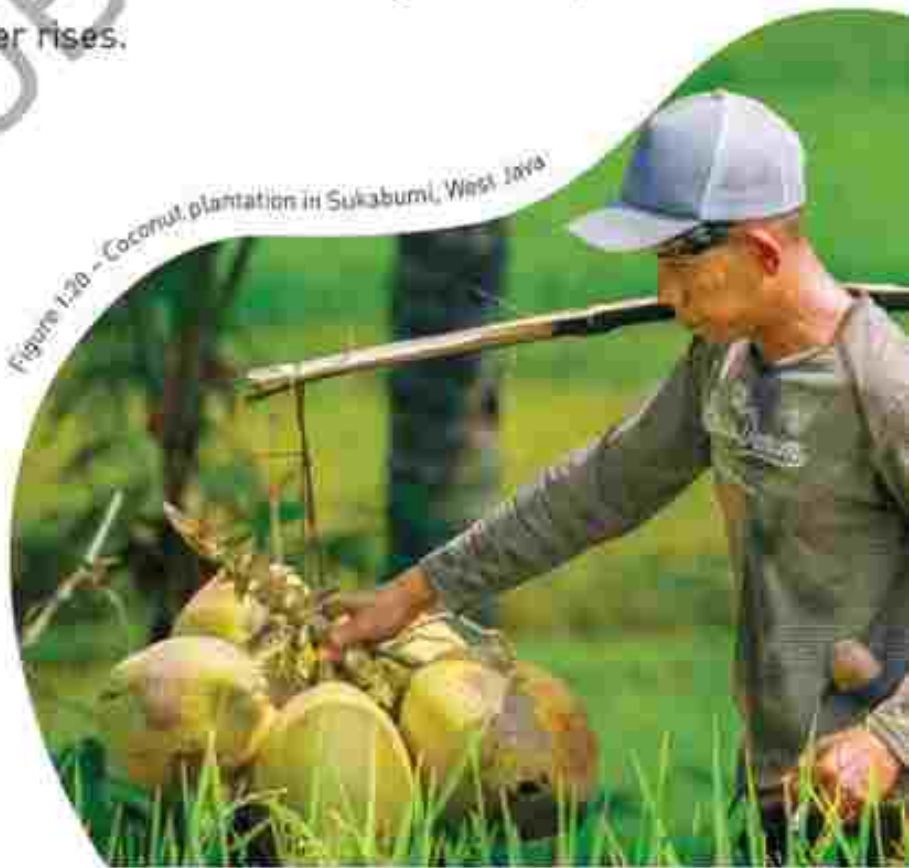
Homes in the Lowlands

Houses in the lowlands are designed for warm weather. In flood-prone areas, they are often built on stilts to stay safe from rising water. Some people even build houses that float on the water, especially in areas with large rivers or lakes. These floating homes can move slightly with the water and are designed to stay stable and dry, no matter how high the water rises.

Crops in the Lowlands

The warm, humid climate of the lowlands is perfect for growing a variety of crops. Rice is the main crop, but people also grow coconuts, bananas, mangoes, and pineapples. These tropical fruits and plants love the heat and grow quickly in the lowland environment.

Figure 1.20 – Coconut plantation in Sukabumi, West Java



Jobs in the Lowlands

Jobs in the lowlands depend on where people live. In the outskirts, many work as farmers, some also raise animals like chickens and ducks, or work as fishermen. Closer to the city, people have different kinds of jobs. They might work as shop owner that sells various goods, teachers, or factory workers. Cities in the lowlands are also home to busy markets and offices.



Figure 1.21 – Farmers in lowland, Pantura, Central Java



Figure 1.22 – Seren Taun Festival, West Java

Cultural Festivities

Seren Taun is a traditional harvest festival from West Java, Indonesia. It is a way for people to celebrate the crops they've grown all year.

During the festival, they carry rice in a big parade. Everyone wears traditional clothes and plays music. After that, they pray together and have fun with dancing, singing, and other performances.



Sometimes the earth shakes or the wind blows strong. How do people stay safe when natural disasters happen?

Natural disasters like earthquakes, hurricanes, and floods can be very dangerous, but humans have learned to adapt by building homes that protect them. People have created special ways to make their houses strong and safe. Let's explore some of Indonesia's traditional houses and see how they keep people safe during disasters.

Earthquake-Ready Houses: Dancing with the Earth

Traditional houses in Indonesia, like the Rumah Minahasa in North Sulawesi and Omo Hada in Nias, are cleverly built to handle earthquakes. These houses are made with wooden frames that use wooden nails instead of iron nails, which makes them strong yet flexible. The houses rest on stones rather than being attached to the ground, so they can sway safely during an earthquake.



Let's Explore the World!

Apart from Indonesia, people in other part of the world also build houses to protect them from natural disasters. Let's explore some of these amazing houses!



Figure 1.24 – Florida, United States

Hurricane-Proof Houses: Armor Against the Storm!

In places like Florida, where big storms called hurricanes happen a lot, houses are built to stay strong in the wind. The roofs are held down really tight, the windows are extra strong, and the walls are tough. It is like putting a suit of armor on the house to keep it safe during the storm.

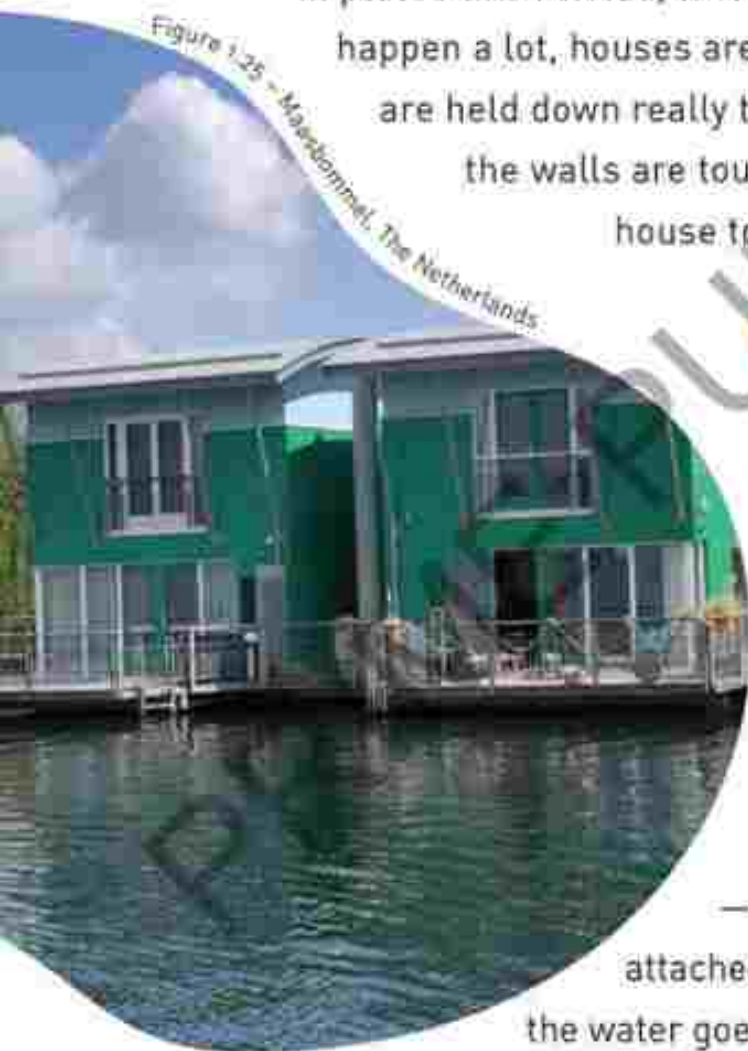


Figure 1.25 – Maasbommel, The Netherlands

Floating Houses: Staying Safe from Floods in Style

In the Netherlands, they built super cool floating houses in a town called Maasbommel. These houses can float when the water rises, just like a boat. Even when a big flood comes, the house stays dry inside because it can float up high, about 5.5 meters. And do not worry — the house would not float away because it is attached to strong poles that keep it in place. When the water goes down, the house goes back to where it was.

1. Natural landscapes are classified into two main types, which are _____ and _____.
2. The part of the land that juts into the sea is called _____.
3. The low-lying land between foothills is called _____.
4. A narrow sea that separates two nearby islands is called _____.
5. A very vast sea is called _____.

Key Terms

- Sea** : are vast bodies of saltwater that cover most of the earth's surface
- Land** : the solid part of the Earth
- Landscape** : different natural features on the Earth's surface
- Peninsula** : a piece of land that sticks out into the sea that bigger than cape
- Valley** : low area between foothill or along the banks of river

Points to Reflect

- Landscapes include areas of land and water.
- Land areas include highlands, lowlands, mountains, capes or peninsulas, and valleys.
- Water areas include rivers, lakes, seas, and oceans.
- People adapt to weather, food, disasters, and obtaining daily needs.
- The more people rely on nature, the more it shapes how they live every day.

A. Choose the correct answer.

- These are types of landform, **except** _____.
 - cape
 - mountain
 - valley
 - forest
- A very high and large hill is called a _____.
 - mountain
 - mountain range
 - plateau
 - cliff
- Ujung Genteng in West Java is an example of a _____.
 - mountain
 - sea
 - cape
 - lake
- An example of adapting to temperature is _____.
 - building stilt houses
 - wearing a jacket to stay warm
 - working as a fisherman
 - planting crops
- Which of the following is a landscape with cold temperatures?
 - Mountain
 - Beach
 - Sea
 - Desert

B. Check [✓] the correct statements and cross [X] the wrong ones.

- An area with many connected mountains is called a hill.
- Dieng is a famous highland in Central Java.
- Tea plantations are found in the beach.
- People live near the beach usually work as a fisherman.
- A narrow sea between two islands is called a cape.



C. Draw lines to connect the picture and its name.



Source: 4045/freepik.com



Source: jcomp/freepik.com



Source: goinyk/freepik.com

Valley

Lake

Mountain

D. Answer the following questions.

Evaluation

1. Why do humans adapt?

2. How do people in the highland keep their body warm?

E. Look at the pictures and fill the gaps.

Source: budaya bali editorial /budayabali.com/2023



_ T _ _ T

Source: life4orstock/freepik.com



_ E _ C _

Source: eyes1n1/freepik.com



_ C _ N

- F. You are exploring the lowlands. It is hot and sunny here, with rice fields stretching out in every direction. What do people do to stay cool? What kind of food do they eat? How do they stay safe from floods?

Critical Thinking

Life Skills and Subject Integration

- G. Indonesia has lots of different landscapes. That is why the people who live there have different social and cultural lives. Put a check (✓) next to the right behaviors for dealing with social and cultural differences in society.

1. Learning about and appreciating your own culture.
2. Respecting and celebrating cultural differences, both local and global.
3. Ignoring local traditions in favor of foreign trends.
4. Preserving local traditions while being open to new ideas from other cultures.
5. Believing your culture is better than others.

H. Now that you have explored the amazing landscapes of Indonesia. It is time to create your own Adventure Map! In your map, draw one of your favourite places we have visited today, mountains, valleys, rivers, lakes, and seas. Do not forget to mark the places where your adventures took place! Then, colour it!



Social Emphaty: Respecting Landscapes and Cultures

Every landscape has its own beauty and culture shaped by the people and nature around it. From highland terraces to lowland beaches, these places remind us to respect diversity and protect our environment. Together, we can ensure these wonders remain vibrant for future generations to enjoy.



A. Choose the correct answer.

- Which one is a natural landscape?
 - Tree
 - Valley
 - Car
 - House
- People living near the coast often work as _____.
 - fishermen
 - farmers
 - miners
 - teachers
- What do you call a narrow sea between two islands?
 - Strait
 - Bay
 - Peninsula
 - Gulf
- Tanjung Puting in West Kalimantan is an example of a _____.
 - mountain
 - lake
 - cape
 - river
- The solid parts of Earth with mountains, valleys, and plains are called _____.
 - water
 - land
 - sky
 - clouds
- What is a way people adapt to hot weather?
 - Wearing cozy jackets
 - Building houses on stilts
 - Wearing light, cool clothes
 - Planting lots of trees
- Which natural feature was created by volcanic activity?
 - Lake Toba
 - Java Sea
 - Bali Beach
 - Sumatran River

8. Which area would most likely have sandy beaches?
- a. Coastal area
 - b. Valley
 - c. Highland
 - d. Plateau
9. Which region is known for cool air and high elevation?
- a. Lowland
 - b. Highland
 - c. Coastal area
 - d. Rainforest
10. A highland is usually _____.
- a. a flat place by the sea
 - b. a cool, hilly area above 500 meters
 - c. a sandy desert
 - d. a dense forest
11. Which of these best describes a lake?
- a. A large area of water with land all around
 - b. A flowing river
 - c. A narrow waterway between islands
 - d. A small pool of water
12. Check out this picture of a lowland with rice fields.



Source: [nikitaburda/freepik.com](https://www.freepik.com)

What is the best way to describe this land?

- a. Close to mountains
- b. Close to sea level
- c. At the highest point in the region
- d. Covered with dense forests



13. Which of these is the best description of a valley?
- a. Flat area at sea level
 - b. Low area between mountains
 - c. Small lake with mountains around
 - d. Large, flat desert
14. People living in mountainous areas often adapt by _____
- a. building floating houses
 - b. growing crops on terraces
 - c. planting rice fields near rivers
 - d. raising cattle only
15. People living in areas with frequent flooding often adjust their homes by _____.
- a. building underground shelters
 - b. elevating their houses on stilts or higher ground
 - c. building homes close to the riverbanks
 - d. constructing stone walls around their homes

B. Check (✓) the correct statements.

- 1. Valleys are found between mountains.
- 2. High temperatures are common in lowlands area near the sea.
- 3. The cool air in highlands makes it perfect for growing vegetables like carrots and cabbage.
- 4. People living in mountain areas do not need to adapt to their surroundings.
- 5. Rivers flow downhill, starting from high places like mountains.

C. Draw lines to connect the picture and its name.



Source: nikitabuida/freepik.com



Source: igorluchay/freepik.com



Source: wirestock/freepik.com



Source: bborriss67/freepik.com



Source: michelangelo/freepik.com

• River

• Valley

• Cape

• Lake

• Mountain

D. Fill the gaps with the correct words from the box.

Sea level

Cool

Valleys

Sea

Fishermen

1. A lowland is a flat area usually found close to _____.
2. In highlands, the air feels _____ and is perfect for growing some crops.
3. _____ are low areas where rivers often flow between mountains.
4. A cape is a piece of land that sticks out into the _____.
5. In coastal areas, many people work as _____ because they live near the water.

E. Answer the following questions.

1. What is the difference between a cape and a peninsula?

2. Why do people in hot places sometimes wear light, cool clothes?

3. How do rivers help the areas they flow through?

4. What kind of landform is best for rice paddies?

5. Name a famous highland in Indonesia and what makes it special!



F. Write 'T' for true and 'F' for false statement.

1. Coastal areas are always cold and have highlands.
2. A valley is a high land area over 500 meters.
3. Lowlands are often near the coast and have rice fields.
4. People in highlands grow crops like rice and corn because of the warm climate.
5. A peninsula is a small piece of land sticking out into the sea, similar to a cape.

G. Answer these critical thinking questions.

1. Imagine you live in a cool, highland area. What kinds of crops might people grow there, and why?

2. If you lived in a lowland area by the sea, what natural challenges might you face? How could you adapt?

3. Why do you think valleys are often chosen for farming and living?

4. How might people in lowlands areas adapt their houses to protect against water rises?

5. If you visited a valley, what resources or activities might you find there?
